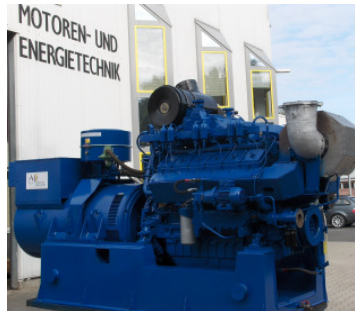


# Stock List ReNEWed PARTS

## DEUTZ TCG 2016 V 12

- Completely overhauled
- entirely mounted on a frame with a completely overhauled generator and a new coupling.
- also obtainable as a B-version on request.



## ASYNCHRONOUS GENERATOR

Manufacturer: **Piller**

Type: DG 355K - 4S

3~Generator

1510 1/min

400 V 476 A 50 c.p.s.

300kw



## MTU 2000 V16

Motor incl. Gear

Rated Power 1800 HP at 2300 RPM

Model R1627K03

Operating hours ca. 600 h dismantled

Getriebe  $i = 2,46:1$



## ENGINE BLOCK / HOUSING for:

KHD 6M 628

KHD 6M 528

KHD TBD 616 V16

MWM TBD 440/6 K

Waukesha VHP 5790 / 7042

## Crankshaft

<b>Maker</b>	<b>Engine type</b>	<b>crankpin (mm)</b>	<b>Rep.-Step (mm)</b>	<b>main journal (mm)</b>	<b>Rep.-Step (mm)</b>
<b>ABC</b>	6 MDX	167,74		183,49	
<b>CATERPILLAR</b>	3516	134,39	-0,25	159,39	-0,25
<b>CUMMINS</b>	KTA 28	107,93		165,0	
<b>DAIHATSU</b>	6 DL 18	144,48	-0,5	154,48	-0,5
<b>KHD</b>	A4M 428	135f7	standard size	150f7	standard size
<b>KHD</b>	RBV 6M 536	164,5	-0,5	164,0	-1,0
<b>KHD</b>	12 M 816	97,73	0,25	123,73	-0,25
<b>KHD</b>	6M 716	92,0	standard size	95,0	standard size
<b>KHD</b>	6M 716	92,0	standard size	100,0	standard size
<b>KHD</b>	RBV 6M 536	164,5	-0,5	164,0	-1,0
<b>KHD</b>	SBA 8M 528	158,99	-1,0	188,99	-1,0
<b>KHD</b>	9 M 628	173,98	-1,0	208,99	-1,0
<b>KHD</b>	SBV 6M 545	209,0	-1,0	219,5	-0,5
<b>KHD</b>	4 M 528	135,0	standard size	150,0	standard size
<b>KHD</b>	12 M 816	97,73	-0,25	123,73	-0,25
<b>KHD</b>	6 M 716	92,0	standard size	95,0	standard size
<b>KHD</b>	6 M 716	92,0	standard size	100,0	standard size
<b>MAK</b>	6 M 20	152,0	standard size	180,0	standard size
<b>MAK</b>	8M 282	169,99	standard size	179,99	standard size
<b>MAK</b>	8 M 20	152,0	standard size	180,0	standard size
<b>MAN</b>	7L 20/27	131,98	-1,0	150,98	-1,0
<b>MAN</b>	G5V42	205,0	standard size	205,0	standard size
<b>MAN B&amp;W</b>	12 V 28/32 A	229,0	-1,0	259,0	-1,0

Maker	Engine type	crankpin (mm)	Rep.-Step (mm)	main journal (mm)	Rep.-Step (mm)
MWM	TBD 602 V16	124,60	-0,4	149,60	-0,4
MWM	TBG 602 V16	124,60	-0,4	149,60	-0,4
MWM	TBD 232 V12	89,94	standard size	99,70	standard size
MWM	441 V 16	173,97	-1,0	199,47	-0,5
MWM	TBD 620 V 16	127,59	-0,4	151,59	-0,4
MWM	TBD 620 V 16	127,98	standard size	151,99	standard size
MWM	604 BL 6	149,0	-1,0	179,0	-1,0
NIIGATA	6L 25 BX	174,49	-0,5	198,99	--1,0
SKL	6NVD 26/20-AL 2	149,48	-0,5	179,48	-0,5

### Valve Cages

Maker	Engine type	Designation	Execution	Status
DEUTZ / MWM	348	exhaust valve cage/ unit		Recon
	484	exhaust valve cage/ unit		Recon
	501-6	exhaust valve cage/ unit	cooled type, one channel version	Recon
	501-10	exhaust valve cage/ unit	cooled type	Recon
	TBD 645-3	exhaust valve cage/ unit	cooled type	New / Recon
	TBD 645-4	exhaust valve cage/ unit	cooled type	New / Recon
	TBD 510-3	exhaust valve cage/ unit	cooled type	New / Recon
	TBD 510-4	exhaust valve cage/ unit	cooled type	New / Recon
	540	exhaust valve cage/ unit		New
	BVM 540	exhaust valve cage/ unit	uncooled removable seat	New / Recon
	BVM 540	exhaust valve cage/ unit	cooled type	New / Recon
	BVM 540 / 640	exhaust valve cage/ unit	cooled seat for maritime business	New / Recon

<b>Maker</b>	<b>Engine type</b>	<b>Designation</b>	<b>Execution</b>	<b>Status</b>
<b>DEUTZ / MWM</b>	BVM 640	exhaust valve cage/ unit	cooled seat for power plants	New / Recon
<b>MAK</b>	551 / 552	exhaust valve cage/ unit	cooled type	Recon
	551	exhaust valve cage/ unit	uncooled	Recon
	M 601 AK	exhaust valve cage/ unit	single port version	Recon
	M 601 C	exhaust valve cage/ unit	star head version	Recon
<b>MAN</b>	40 / 54 4-Fuß	exhaust valve cage/ unit	cooled type, 4 feet version	Recon
	40 / 54 A	exhaust valve cage/ unit	cooled type, single port version	New / Recon
	L 40 / 54	exhaust valve cage/ unit	cooled type	Recon
	L/V 48 / 60	exhaust valve cage/ unit	cooled type	New / Recon
	52 / 55 B RE.	exhaust valve cage	cooled type, right hand	Recon
	52 / 55 B LI.	exhaust valve cage	cooled type, left hand	Recon
	52 / 55 A RE.	exhaust valve cage	cooled type, right hand	Recon
	52 / 55 A LI.	exhaust valve cage	cooled type, left hand	Recon
	52 / 74 A	exhaust valve cage	cooled type	Recon
	L 58 / 64	exhaust valve cage/ unit	cooled type	New / Recon
<b>STORK</b>	TM 410 RE.	exhaust valve cage	single port, cooled version, right hand	Recon
	TM 410 LI.	exhaust valve cage	single port, cooled version, left hand	Recon
<b>SEMT</b>	PC 2.5 R	exhaust valve cage	single port, cooled version, right hand	New
	PC 2.5 L	exhaust valve cage	single port, cooled version, left hand	New
	PC 2.6 R	exhaust valve cage	single port, cooled version, right hand	Recon

## Cylinderhead

<b>Maker</b>	<b>Engine type</b>	<b>Execution</b>	<b>Status</b>
<b>DEUTZ / MWM</b>	435	complete	Recon
	SBV 628	complete incl. starting valve	Recon
	540	old version, bare	Recon
	545	Capped, complete incl. starting valve	Recon
	640	bare	Recon
	TBD 645	complete, without valve cages	Recon
	440	complete and bare	Recon
	TBD 440-K	complete	Recon
	528	engine III, complete and bare	Recon
	TBG 632	bare	Recon
<b>MAN</b>	L 20 / 27	Aux version, complete	Recon
	L 20 / 27	ME version, complete	Recon
	L 16 / 24	complete	Recon
<b>NOHAB</b>	W 25	complete	Recon
<b>WÄRTSILÄ</b>	R 32 E	complete	Recon

Are you searching for a certain engine or a certain engine component?

Or do you want to get further information about the listed engines or engine parts?

Do not hesitate – contact us:

**Mr. Johannes Wessels**

Tel.: +49 5931 9844-18  
 Fax: +49 5931 9844-55  
 E-Mail: wessels@me-meppen.de

**Mr. Franz Tümmers**

Tel.: +49 5931 9844-14  
 Fax: +49 5931 9844-55  
 E-Mail: tuemmers@me-meppen.de

Subject to modifications